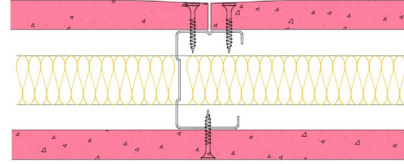


## 50-K-56(25) - SPEEDLINE System Data Sheet - Version V1 (24-10-23)

SPEEDLINE 50mm 'C' Stud Partition @600mm Ctrs,  
with Knauf 15mm Fire Panel each side, 25mm APR



### System Performance Breakdown

Fire Resistance:

BS476 Part 22:1987:

Test Ref & Date or Applied Ref & Report:

Max Height:

Thickness:

Duty Grade: BS 5234: Part 2:1992:

Sound Insulation:

**60/60 Minutes** (Integrity/Insulation).

**BRE 248834 - BRE Report P102396-1011B**

**Refer to Speedline Specification Clause**

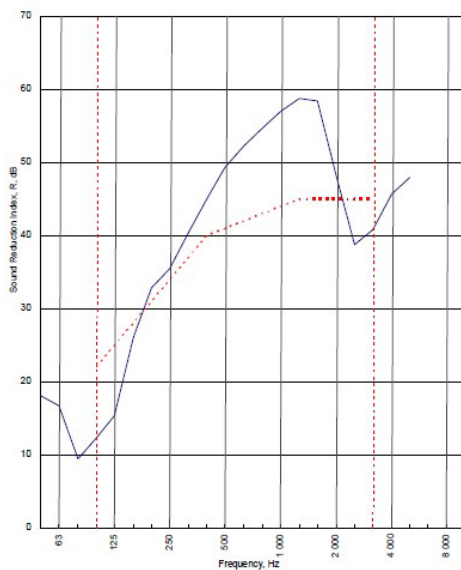
**82 mm.** (At Base Track, Excluding Finishes)

**Heavy - Annexes A-F**

**41  $R_w$ dB**, Date Tested or Assessed Against - 50-K-52(25)

Test Code:	H17386EA
Test Date:	16/06/2011


Freq. Hz	R dB
50	18.0
63	16.7
80	9.4
100	12.2
125	15.3
160	26.0
200	32.8
250	35.5
315	40.4
400	45.0
500	49.3
630	52.3
800	54.7
1 000	57.0
1 250	58.8
1 600	58.4
2 000	48.1
2 500	38.7
3 150	40.8
4 000	45.7
5 000	48.0
6 300	
8 000	
10 000	





----- Curve of reference values (ISO 717-1)


Rating according to BS EN ISO 717-1:1997	<b><math>R_w</math> (C;Ctr) = 41 (-4;-11) dB</b>		
Evaluation based on laboratory measurement results obtained by an engineering method:	$C_{50-150} = -5$ dB	$C_{50-500} = -4$ dB	$C_{100-500} = -3$ dB
	$C_{9,50-150} = -14$ dB	$C_{9,50-500} = -14$ dB	$C_{9,100-500} = -11$ dB


TESTED AT ONE OF THE UKAS ACCREDITED LABORATORIES BELOW

B.T.C (H-Ref on Graph) 

B.R.E 

AIRO 

S.R.L 



Customer: Metsec plc Hepsec Division

BTC 17409A: Page 9 of 11



SPEEDLINE Drywall Systems, Adsetts House, 16 Europa View, Sheffield Business Park, Sheffield, S9 1XH.

Tel: 0114 231 8030.

Email: [enquiries@speedlinedrywall.co.uk](mailto:enquiries@speedlinedrywall.co.uk)

(As per the requirements set out in ISO/IEC 17025:2017 regarding test data the results stated have been carried out by voestalpine Metsec plc as part of the contract to supply Speedline Metal Sections to SIG Plc)